



10820 MANKATO STREET N.E.  
(763) 780-9757

BLAINE, MN 55449  
FAX (763) 780-9762

## IMPORTANT

- A. BEFORE INSTALLING FAIRING READ INSTALLATION INSTRUCTIONS THOROUGHLY.
- B. **Any variations from these Installation Instructions could have an adverse effect on the performance of the Fairing or negate any present or future warranty.**

### NO. 1. MIRROR REMOVAL

- A. Unscrew each mirror until threads are totally exposed. Please be aware that most scooters have a right and left hand thread mirror. They will turn opposite of each other when loosening.

### NO. 2. BRACKET ASSEMBLY

- A. Insert windshield mount screw through front of shield and tighten to windshield barrel. Repeat on all 4 windshield mounting holes and set shield aside.
- B. Screw mirror posts into their respective mirror holes. (Please be aware that there is a right and left side for the posts. Trying to screw the wrong post into wrong mirror hole could damage the threads in the holes.)
- C. Place offset brackets on top of mirror posts and mount mirrors as shown on back diagram.
- D. Assemble bolt, star washer, offset bracket, star washer, barrel, thumb screw for each side as shown on diagram.
- E. Slide rods into windshield barrels and insert rods into offset barrels as shown on diagram. Slightly tighten the thumb screws and allen screws until final adjustment.

### NO. 3. FINAL ADJUSTMENTS

At this point, align all brackets so that they are where you want them. Because the bracket is "Universal", you have a lot of flexibility in how you mount the shield. Each rider will have their own personal preference. Once lined up to your liking, tighten allen screws, thumb screws and mirrors firmly.

### NO. 4. WARRANTY

Slipstreamer, Inc. warranties all its products for 1-year against any manufacturing defects. If a warranty should occur, please contact your local dealer or Slipstreamer, Inc. at [www.slipstreamer.com](http://www.slipstreamer.com)

**Note: Manufacturer suggests using Loctite on fasteners that do not require removal to prevent loosening from vibration.**

### CLEANING THE WINDSCREEN

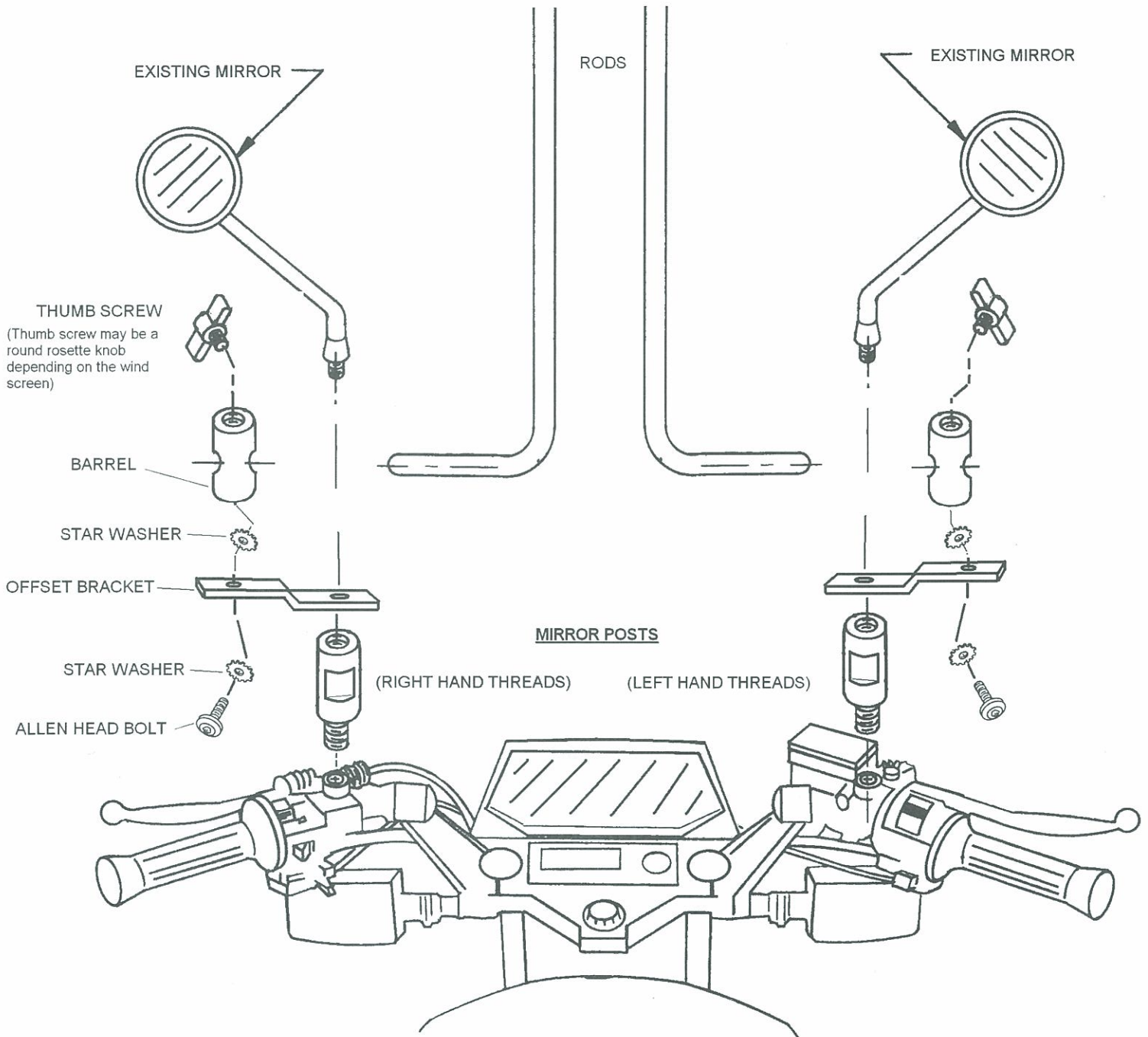
Use **Slipstreamer Cleaner/Polish** and to remove scratches use **Slipstreamer Scratch Remover** available at your Slipstreamer Dealer or wash with a mild soap or detergent and lukewarm water. Use a soft cloth or sponge. Rinse well and blot dry with a damp cloth or chamois.

NEVER USE ABRASIVE CLEANERS, HOUSEHOLD CLEANERS, WINDOW CLEANING FLUIDS, SCOURING COMPOUND, GRITTY CLOTHS, OR STRONG SOLVENTS SUCH AS ALCOHOL, ACETONE, CARBON TETRACHLORIDE, ETC.

To maintain the brilliant luster, wax occasionally with a good grade of automobile wax. (**Not a cleaner-wax combination**). Apply a thin coat with a clean cotton cloth. Then wipe with a clean damp cloth. NEVER USE HOUSEHOLD SPRAY WAXES.

# SCOOT

## INSTALLATION INSTRUCTIONS



MANUFACTURED BY

**slip streamer<sup>®</sup> inc.**

10820 MANKATO ST. NE  
PHONE (763) 780-9757  
E-MAIL: SLIPSHIELD@AOL.COM

BLAINE, MN 55449  
FAX (763) 780-9762

WWW.SLIPSTREAMER.COM